



## VALAIS ALPS - ZERMATT

### Highlights of your tour

Starting from an exceptional valley with its typical Valais villages as postcard scenery, the path through Anniviers from the plain will delight the enthusiasts of Alpine roads with its winding bends. The beauty of the scenery and the discovery of the sites at the foot of the Weisshorn will be all the more appreciated. The connecting routes with the neighbouring valley of Tourtemagne are beautiful and little-known alternatives. Cycling to and from Zermatt with the Matterhorn in your sights is an exceptional experience.

### Pure experience

5\*\*\*\*\* properties

### REGIO TOUR

5 DAYS / 4 nights - 2 destinations

with transfers between the hotels

from **CHF 1225.-** / 1 pax in double

#### Day 1

Transfer to your destination : Val d'Anniviers

Check in at your hotel : Bella Tola

Pick up and check the bike, if hired

Free afternoon. Choice of experiences from the catalogue

Dinner on your own.

#### Day 2

Breakfast at the hotel

Day trips with choice of itineraries based on your level of fitness.

#### Day 3

Breakfast at the hotel

Transfer to your next destination : Hôtel Zermatterhof - Zermatt

Check in

Free afternoon. Choice of experiences from the catalogue

Dinner on your own.

#### Day 4

Breakfast at the hotel

Day trips with choice of itineraries.

Free afternoon. Choice of experiences from the catalogue

Dinner on your own.

#### Day 5

Breakfast at the hotel

In the morning, explore the region or take a bike ride

Return and check of the bike, if hired

Check-out until 11:00 am

**Itinerary** : you choose the difficulty of your route every day.

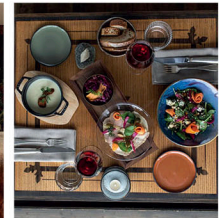
You can change it at any time. We leveled each course in 3 degrees :

**Blue**, pure pleasure (easy, tourist, between 20 and 50 km, limited elevation)

**Red**, discovery (medium, amateur, between 40 and 80 km, controlled elevation)

**Black**, sporting challenge (difficult, between 80 and 120 km, significant elevation).

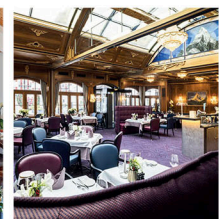
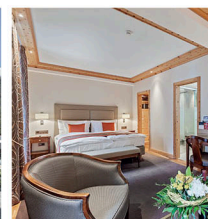
Hôtel **Bella Tola** - Val d'Anniviers



Lake de Moiry - Val d'Anniviers



Hôtel **Zermatterhof** - Zermatt



**A minimum of 10 participants is required**

Not included in the price :

- Meals and drinks - Bike rental - Personnel guiding - Transfers from/to the airport

- Any other activity not mentioned in the program

The choice of hotels is not mandatory, and is adjusted based on the number of reservations.

**Suitable for riding on open roads with traffic**

**Contact us now !**