

Jogne Valley

Charmey

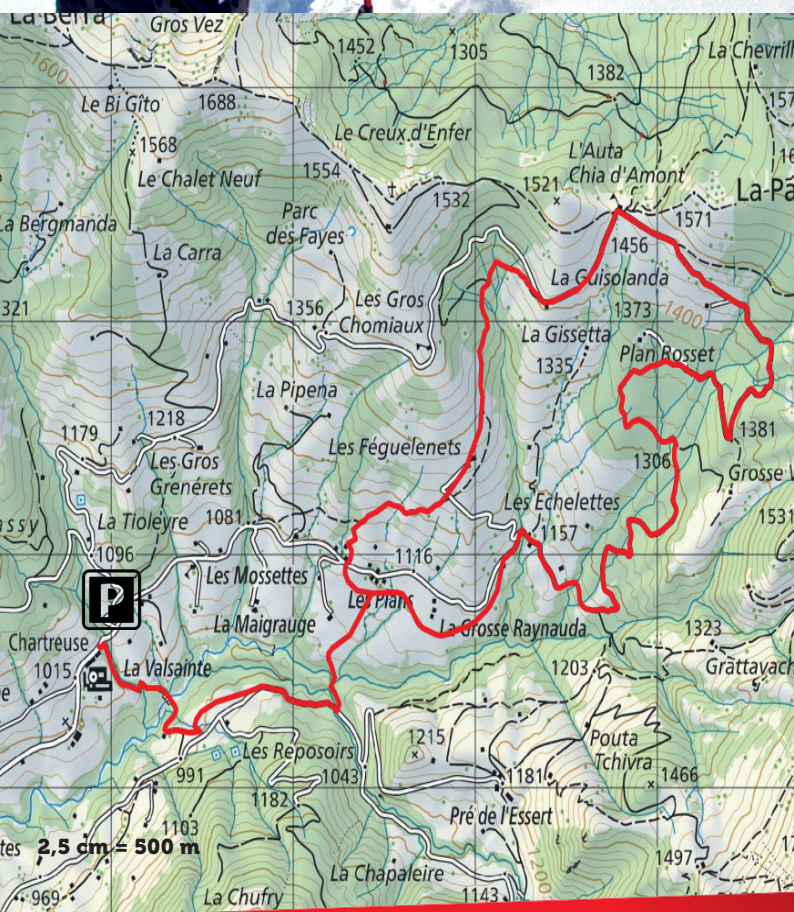
AUTA CHIA TRAIL
Snowshoe trail

Description

DIFFICULTY DIFFICULT	TYPE OF ACTIVITY SPORT
DURATION 3.30 HOURS	LENTH 9 KM
POSITIVE ALTITUDE 396 M	NEGATIVE ALTITUDE 406 M
ALTITUDE MIN. 1081 M	ALTITUDE MAX. 1467 M
PARKING AND START LES PLANS, 1654 VAL-DE-CHARMEY	



LA GRUYÈRE
UN PAYS DE CŒUR LA-GRUYERE.CH



In this valley of the Javroz, the monks of the Valsainte have found their source of life there. Take this looped tour for inspiration.

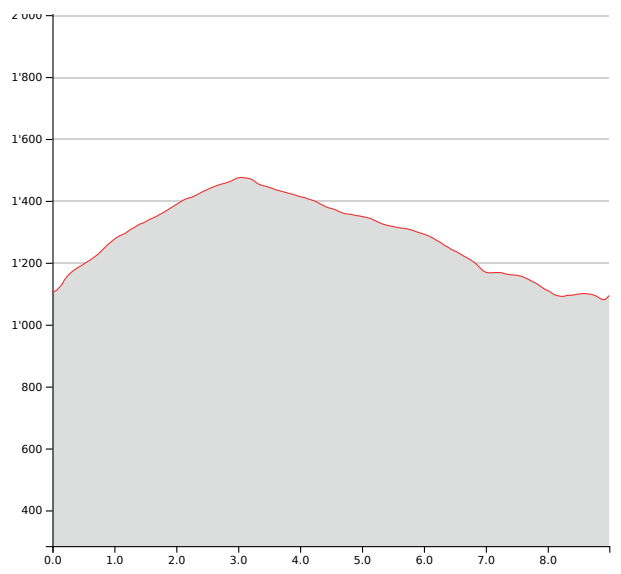
The trail starts near the imposing Valsainte enclosure. It will take you to the high ground in about 1h30.

The route takes you to several mountain pasture chalets, part of the Fribourg cultural heritage: the Féguelenets pasture and its large chalet, followed by a route through the Guisolanda forest, in a calm and magical environment. An impregnable panorama awaits you: Moléson, Dent de Broc, Gros Brun, Vounetse and Berra. Once you reach the pass, you will discover the Auta Chia mountain hut (closed in winter), from where you can also reach La Berra by a pretty ridge to the West, or to the East Schwarzsee via La Patta and Le Fuchses Schwyberg.

The return is mainly between clearings and forests, to get to Les Echelettes by the forest road. Allow about 2 hours for the descent. The Auta Chia itinerary can be done in both directions.

This unprepared itinerary is marked. You take this trail at your own risk. Snowshoeing is done in the mountains, therefore, certain rules must be respected for your safety.

More information at
www.la-gruyere.ch/snowshoeing



FOR QUESTIONS

La Gruyère Tourisme
Place des Alpes 26, 1630 Bulle
T +41 (0)848 424 424 / www.la-gruyere.ch/snowshoeing

#lagruyere

LA GRUYÈRE
UN PAYS DE CŒUR LA-GRUYERE.CH