

Jogne Valley

Charmey

HAUTA CHIA TRAIL
Snowshoe trail

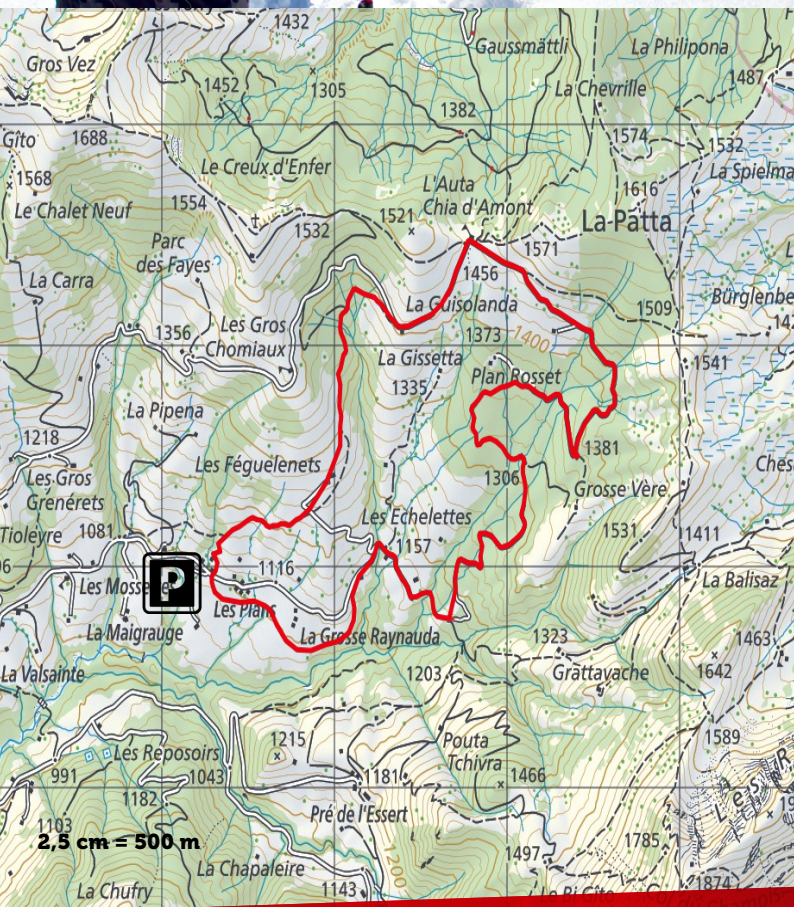
Description

DIFFICULTY DIFFICULT	TYPE OF ACTIVITY SPORT
DURATION 4.30 HOURS	LENGTH 9 KM
POSITIVE ALTITUDE 396 M	NEGATIVE ALTITUDE 406 M
ALTITUDE MIN. 1081 M	ALTITUDE MAX. 1467 M
PARKING AND START LES PLANS, 1654 VAL-DE-CHARMEY	



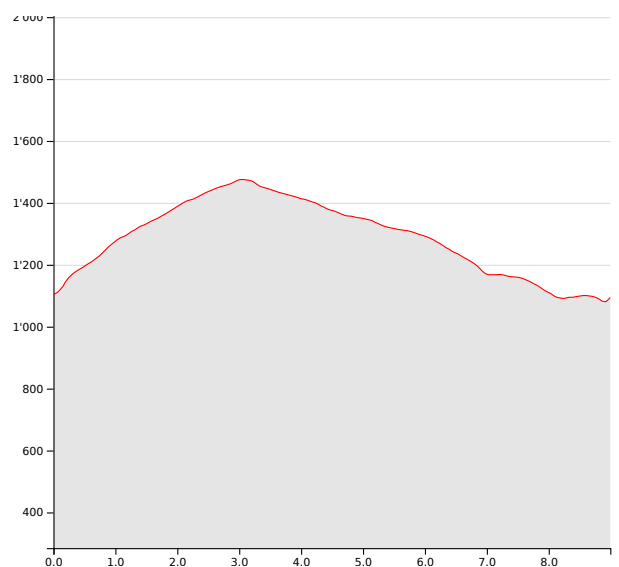
In this valley of the Javroz, the monks of the Valsainte have found their source of life there. Take this looped tour for inspiration.

The trail starts from the car park, 2 km after Valsainte. In 1h30, it will take you to the heights, crossing the Féguelenets pasture and its large chalet, then a pleasant stroll in the forest to reach La Guisolande. It's quiet and beautiful. Some of the highest peaks of the Fribourg prealps are there, in front of you. From this trail, it is also possible to reach Lac Noir. On the pass, you arrive at the Auta Chia chalet (closed in winter). From this chalet you can reach La Berra. To get back to the starting point, take the forest road between clearings and forests. It takes 2 hours to complete. The loop can also be done in the other direction.



This unprepared itinerary is marked. You take this trail at your own risk. Snowshoeing is done in the mountains, therefore, certain rules must be respected for your safety.

More information at
www.la-gruyere.ch/snowshoeing



FOR QUESTIONS

La Gruyère Tourisme
Place des Alpes 26, 1630 Bulle
T +41 (0)848 424 424 / www.la-gruyere.ch/snowshoeing

#lagruyere

LA GRUYÈRE
UN PAYS DE CŒUR LA-GRUYERE.CH