

Tour des Alpettes



Beauty:

Difficulty:

Fitness:

Popularity:

Distance: 34 km

Time requirement: 3½ h

Ascent: 793 m

Descent: 792 m

Highest point: 1511 m.a.s.l.

Region: La Gruyère

Starting point: Bulle, gare



Tour description

Magnifique circuit, essentiellement en forêt et traversée féérique de la crête sur le Niremout. Merveilleuse descente sur Ratvel mais prudence si humide. Successions de chemins 4x4, singletrails.

Places along the route

Bulle - Derrière Plané - Niremout - Ratvel - Riau Berthoud - Bulle

Variants

Variante A: Niremout – Gros Plané. Depuis Ratvel, magnifique montée sur un sentier en direction de Le Villard. Puis chemins 4x4 jusqu'au Gros Plané. Succession de beaux singletrails pour le retour sur Bulle par la Chia et La Part Dieu.

Difficulté: S2

Note(s)

La première boucle est idéale pour parfaire sa technique mais nécessite une bonne condition physique. La variante est plus exigeante techniquement et se mérite. Attention en cas de terrain humide sinon que du bonheur!

Restauration possible:

Goille au Cerf, Ratvel

See also

FRIBOURG REGION

Information

CP 1560

CH-1701 Fribourg

Tel: +41 (0)26 407 70 20

E-Mail: information@fribourgregion.ch

Internet: www.fribourgregion.ch

La Gruyère Tourisme

Place des Alpes 26

CH-1630 Bulle

Tel : +41 (0) 848 424 424

E-Mail: info@la-gruyere.ch

Internet: www.la-gruyere.ch

Office du tourisme

Tour des Alpettes



Place d'Armes 15

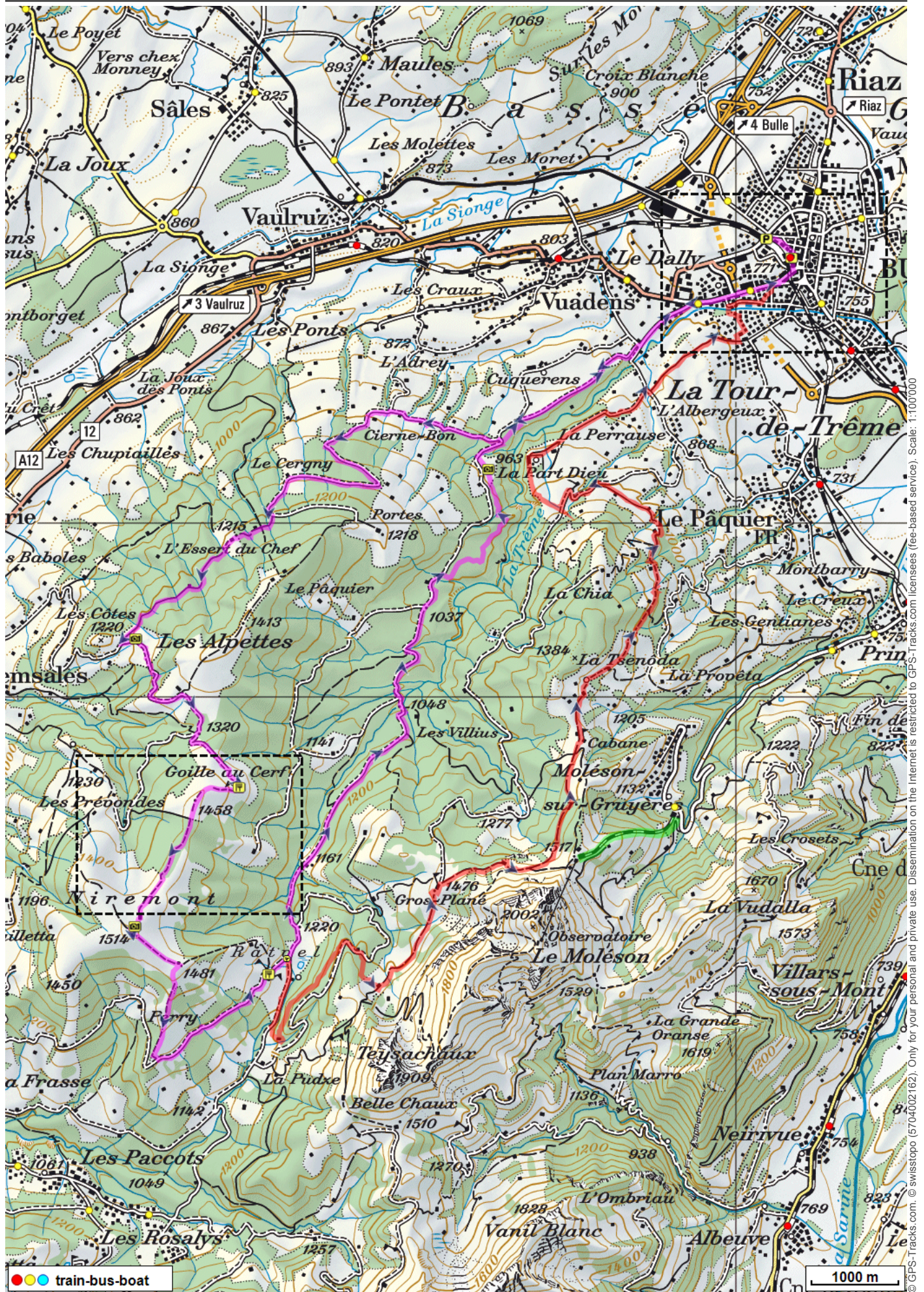
CH-1618 Châtel-St-Denis

Tel : +41 (0)21 948 84 56

E-Mail: info@les-paccots.ch

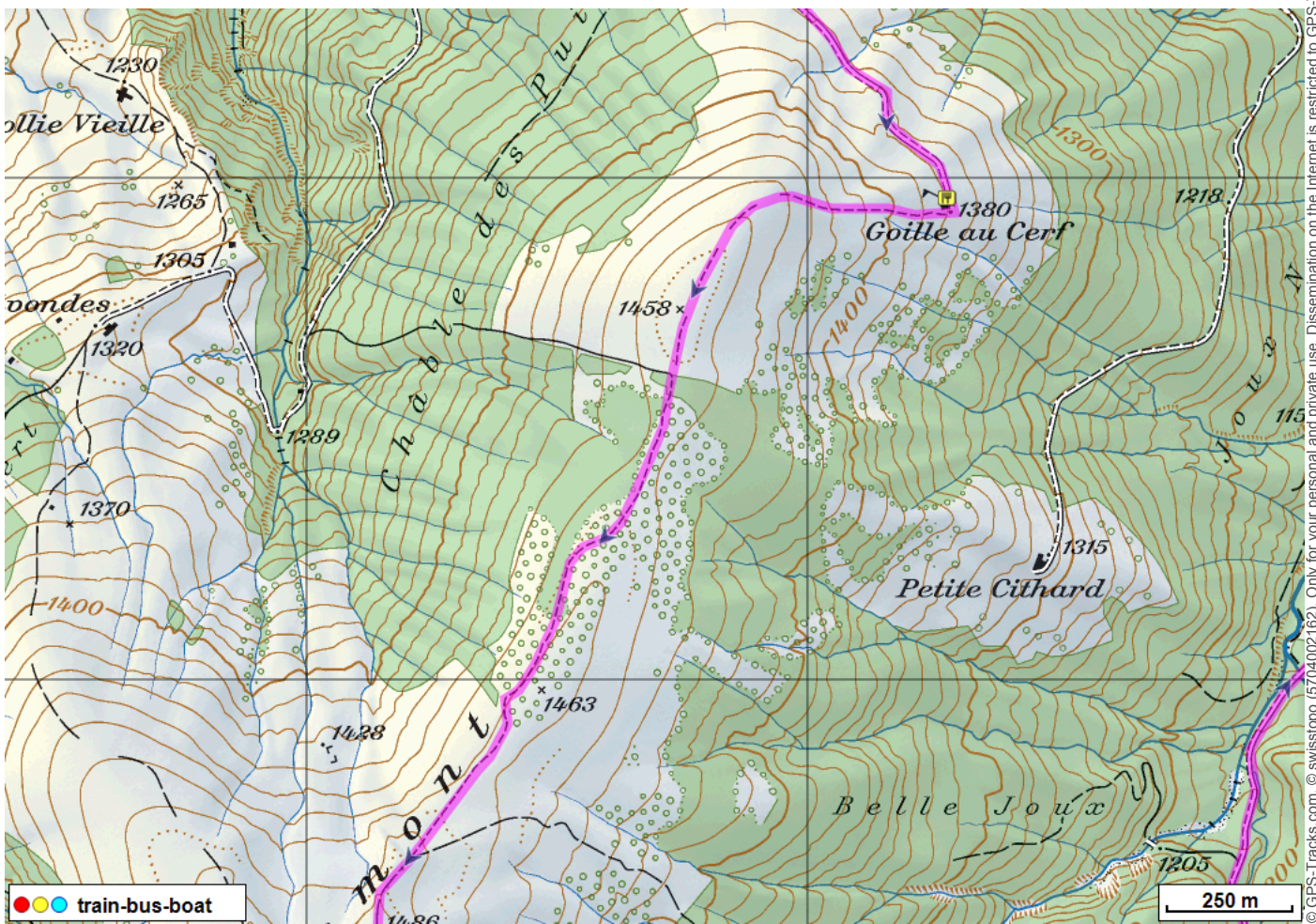
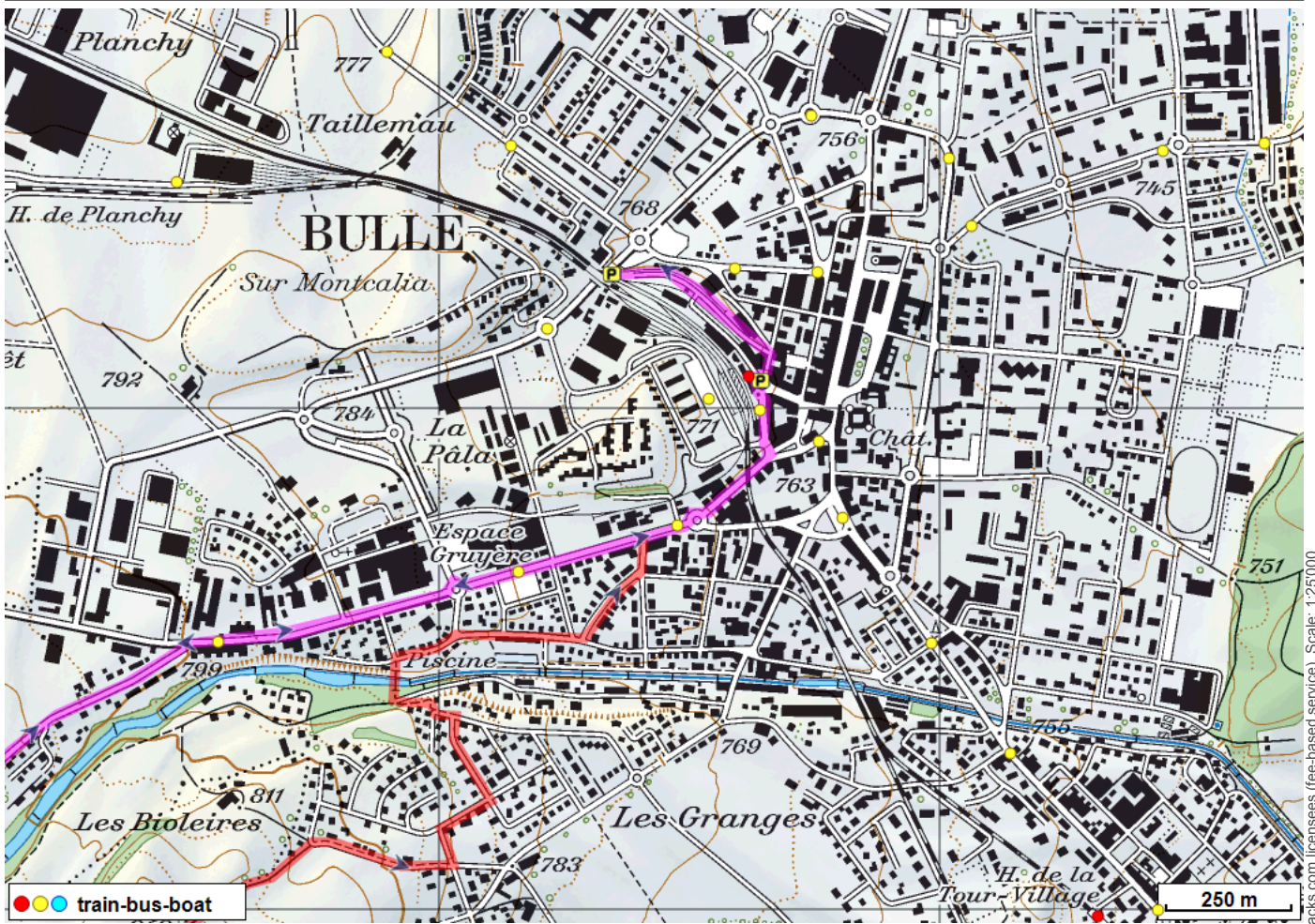
Internet: www.les-paccots.ch

Tour des Alpettes



© swisstopo (6704002162). Only for your personal and private use. Dissemination on the Internet is restricted to GPS-Tracks.com licensees (free-based service). Scale: 1:100000

Tour des Alpettes

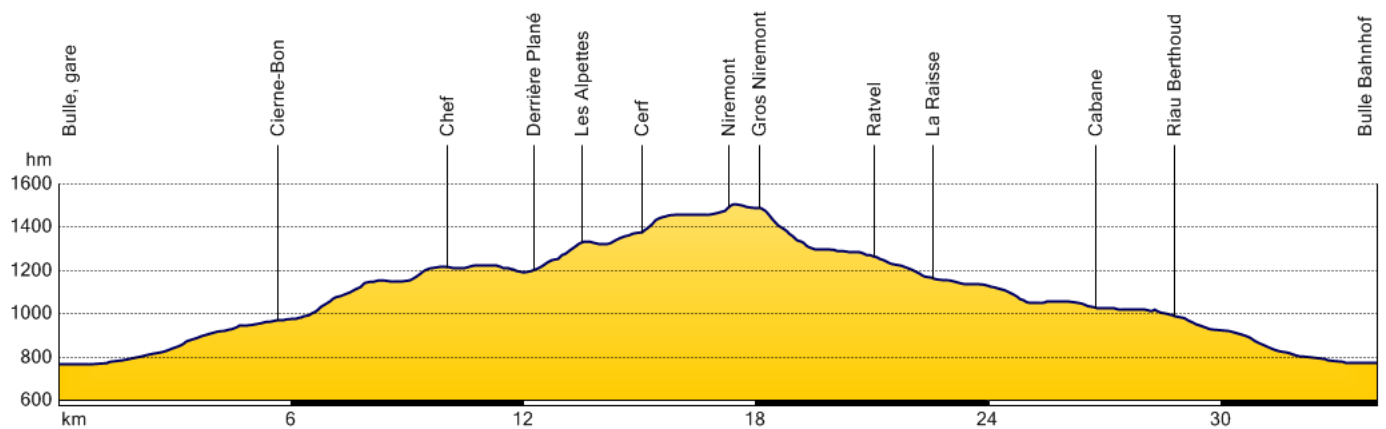


© GPS-Tracks.com. © swisstopo (6704002162). Only for your personal and private use. Dissemination on the Internet is restricted to GPS-Tracks.com licensees (fee-based service). Scale: 1:25'000

Tour des Alpettes



Elevation profile



Download this tour with topo maps on your smartphone (iPhone, Android)

Scan the QR code. As a result, you will receive on your smartphone tour dates and all necessary SwissTopo-maps from scale 1: 25'000, so you can use anything without cell phone reception.



Weather in the area from 15.07.2017



Saturday

Sunshine and clouds mixed. High 21C. Winds N at 10 to 15 km/h.



Sunday

Partly cloudy skies. High 24C. Winds NNE at 10 to 15 km/h.



Monday

Partly cloudy skies. High 26C. Winds light and variable.



Tuesday

Isolated thunderstorms in the morning, then mainly cloudy during the afternoon with thunderstorms likely.

Tour created on: 21.08.2014

Last change: 17.08.2015

Origin: www.fribourgregion.ch / GPS-Tracks.com



FRIBOURG REGION
SUISSE - SCHWEIZ - SWITZERLAND