

# Autour du Gibloux



Beauty:

Difficulty:

Fitness:

Popularity:

Distance: 31 km

Time requirement: 3 h

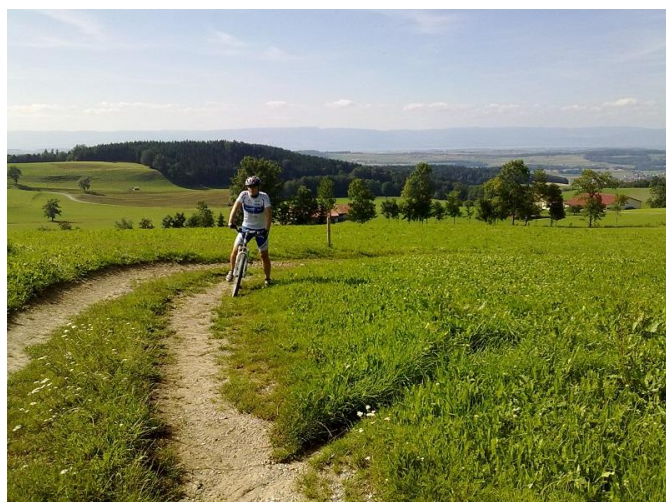
Ascent: 678 m

Descent: 678 m

Highest point: 1205 m.a.s.l.

Region: La Gruyère

Starting point: Romont, gare



## Tour description

Objectif «la Tour du Gibloux»! Elle est en vue dès le départ et est atteinte après une succession de montées, env. 16 km. Retour par le «sentier des sculptures» et quelques beaux singletrails. Alternance de routes secondaires, de chemins carrossables en partie asphaltés et de sentiers.

## Places along the route

Romont - Les Chavannes - Massonnens - Planafaye - Gibloux - Camping - Les Esserts - Estévennens - Villariaz Mézières - Romont

## See also

FRIBOURG REGION

Information

CP 1560

CH-1701 Fribourg

Tel: +41 (0)26 407 70 20

E-Mail: [information@fribourgregion.ch](mailto:information@fribourgregion.ch)

Internet: [www.fribourgregion.ch](http://www.fribourgregion.ch)

La Gruyère Tourisme

Place des Alpes 26

CH-1630 Bulle

Tel : +41 (0) 848 424 424

E-Mail: [info@la-gruyere.ch](mailto:info@la-gruyere.ch)

Internet: [www.la-gruyere.ch](http://www.la-gruyere.ch)

Office du tourisme

Rue du Château 112

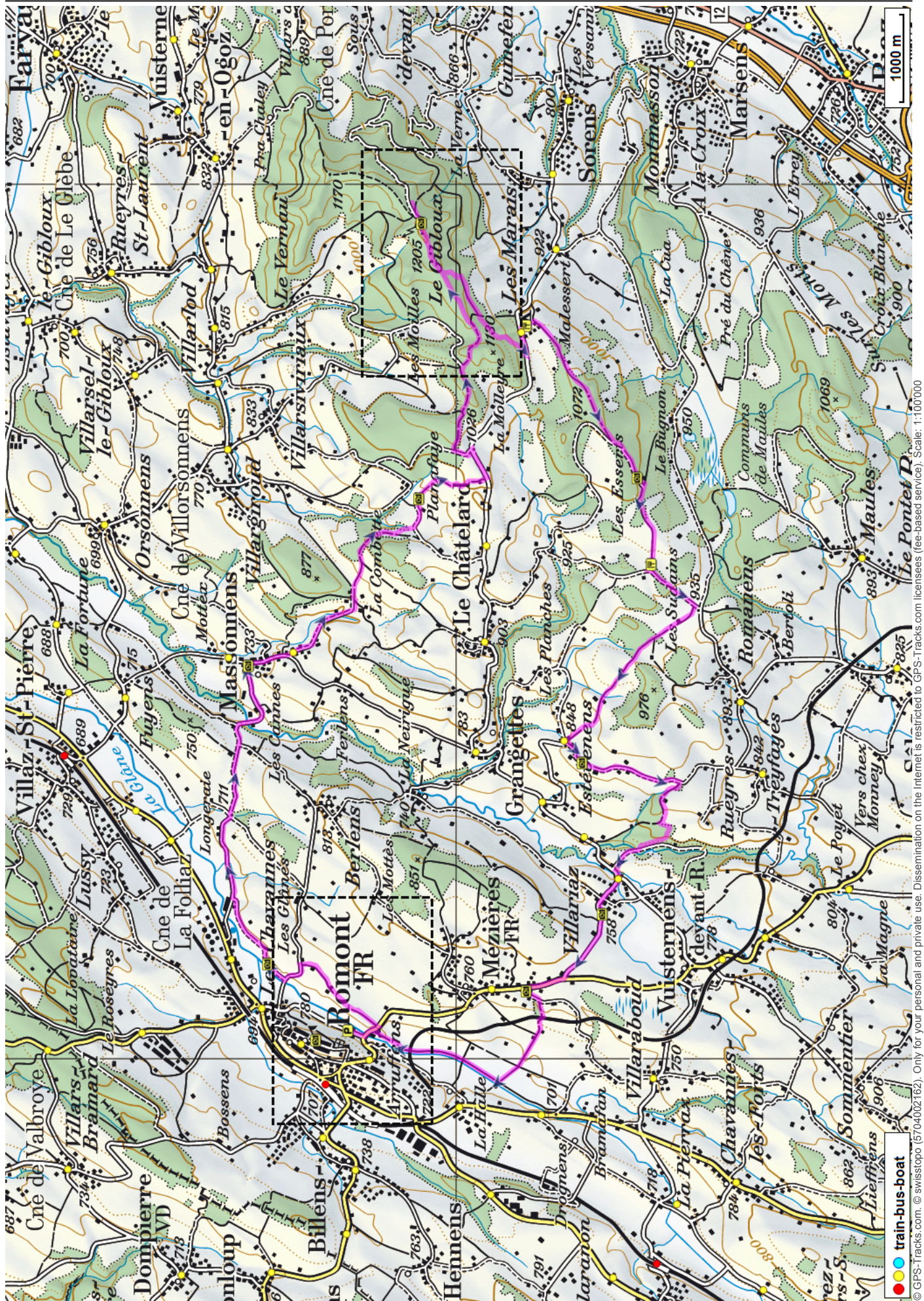
CH-1680 Romont

Tel : +41 (0)26 651 90 55

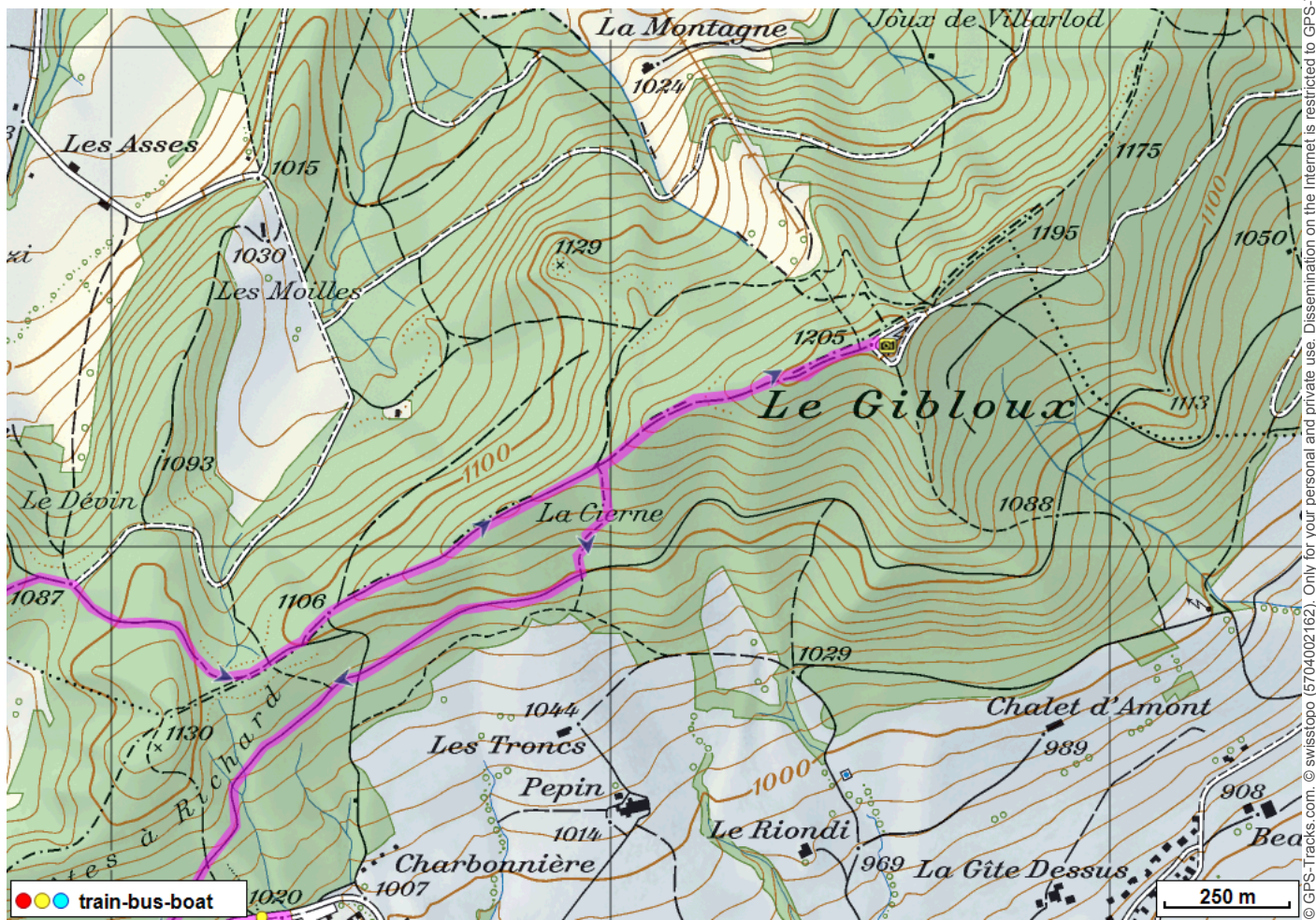
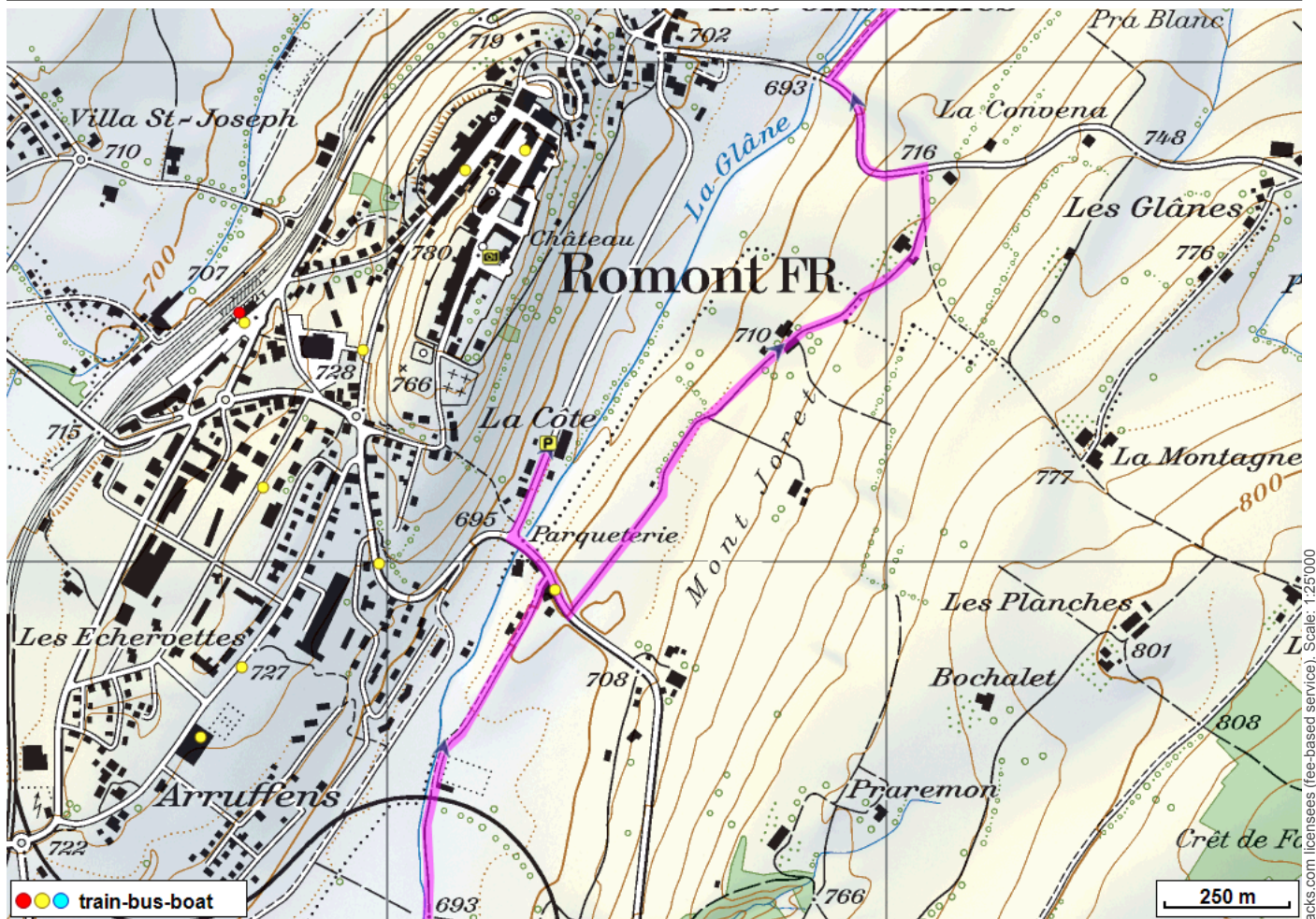
E-Mail: [info@romontregion.ch](mailto:info@romontregion.ch)

Internet: [www.romontregion.ch](http://www.romontregion.ch)

# Autour du Gibloux



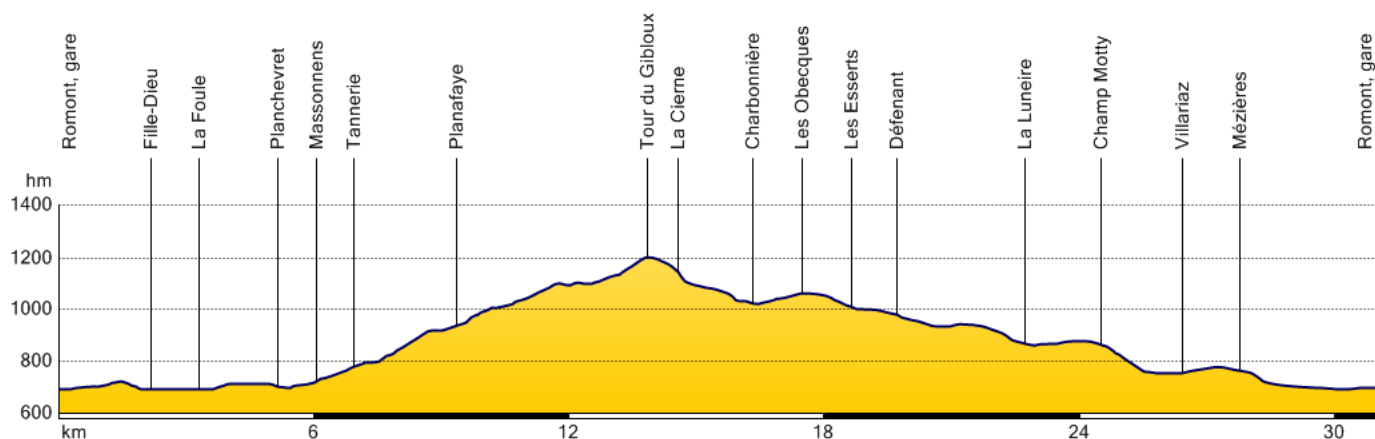
# Autour du Gibloux



# Autour du Gibloux



## Elevation profile



### Download this tour with topo maps on your smartphone (iPhone, Android)

Scan the QR code. As a result, you will receive on your smartphone tour dates and all necessary SwissTopo-maps from scale 1: 25'000, so you can use anything without cell phone reception.



### Weather in the area from 15.07.2017



#### Saturday

Considerable clouds this morning. Some decrease in clouds later in the day. High around 20C.



#### Sunday

Sunny skies. High 23C. Winds NNE at 10 to 15 km/h.



#### Monday

Except for a few afternoon clouds, mainly sunny. High 26C. Winds light and variable.



#### Tuesday

Generally sunny despite a few afternoon clouds. A stray shower or thunderstorm is possible. High 27C.

Tour created on: 03.09.2014

Last change: 17.08.2015

Origin: [www.fribourgregion.ch](http://www.fribourgregion.ch) / [GPS-Tracks.com](http://GPS-Tracks.com)



**FRIBOURG REGION**  
SUISE - SCHWEIZ - SWITZERLAND